

CRYSTALLIZATION KINETICS OF DYED NYLON 6

A. WŁOCHOWICZ, M. EDER

Textile Institute, Technical University of Łódź,
Bielsko-Biała, Poland

ABSTRACT

Isothermal and non-isothermal crystallization of polyamide 6 coloured with selected organic pigments was examined by DSC. It was found that the activity of pigments is connected with their chemical nature and with reduction of the free energy of formation of critical size nuclei. Blue pigment and Red lake are substances which accelerate crystallization of nylon 6.

INTRODUCTION

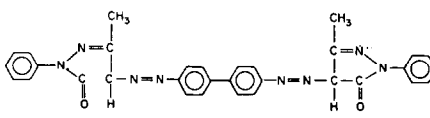
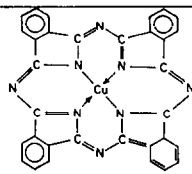
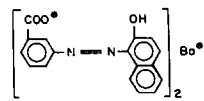
Nylon 6 is widely applied in many fields and for this reason is usually coloured with pigments, mainly obtained by synthesis. Introduced foreign substances, according to their size, shape, concentration, surface energy of the particles, distribution affect kinetics and thermodynamics of polymer. In turn the mechanical properties of nylon are governed by the supermolecular structure.

The purpose of this paper is to determine the effect of some organic pigments on the crystallization rate of polyamide 6 by the use of DSC.

EXPERIMENTAL

In table 1 pigments used as nucleating agents are presented. The homogeneous blending of the additives into the base polymer was attained by melt mixing in the Brabender laboratory extruder. The kinetics of isothermal and non-isothermal crystallization was investigated in a standard DSC cell of the Du Pont 990 thermal analyser. The measurements were carried out in nitrogen on samples of 5 mg. All calculations were performed with the aid of a mini-computer.

TABLE 1
Organic pigments

Pigment	Formula	Molec. weight
Pigment Orange G		631
Copper Phthalocyan. Blue B		577
Lake Red BB		426

RESULTS AND DISCUSSION

Experimental data were analysed in terms of the Avrami equation

$$\ln(1-x) = -Kt^n \quad (4)$$

where: x is the relative degree of crystallinity referred to the state of equilibrium, K is the constant of crystallization rate, n is the exponent depending on the type of nucleation and on the geometry of the crystallite growth. Some typical plots in Avrami co-ordinates are presented in fig.1. As can be seen from the data summarized in table 2 the initial portions of crystallization isotherms of pure polyamide 6 can be fitted to the Avrami function with exponents ranging from 3.4 to 3.8 which formally corresponds to three-dimensional growth of the crystalline structures on thermal and athermal nuclei. The same results have been obtained by Gurato [1] and Ishibashi [2]. In some papers [3,

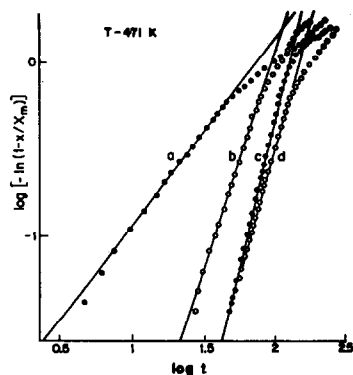


Fig.1. Crystallization isotherms at 471 K: a/ 1% of Blue, b/ 1% of Red, c/ colourless PA 6, d/ 2% of Orange.

4, 5] high values of n up to 10 are reported for initial stages of crystallization. However, those results can be described with $n=4$ from the start of crystallization if the time scale is corrected for the induction period.

TABLE 2

Kinetic parameters of isothermal crystallization of nylon 6 containing organic pigments

Sample	471 K		473 K		475 K		478 K	
	n	$t_{1/2}$	n	$t_{1/2}$	n	$t_{1/2}$	n	$t_{1/2}$
colourless	3.7	100.3	3.8	168.9	3.8	446	3.7	1421
Orange 0.5%	2.5	93.7	2.6	228.0	2.7	490	2.7	1609
Orange 1%	2.7	115.2	2.8	316.2	2.7	708	2.8	1630
Blue 0.5%	1.0	56.3	1.2	99.1	1.1	335	1.2	1060
Blue 1%	1.1	48.8	1.3	92.4	1.3	296	1.3	983
Red 0.5%	2.5	94.2	2.5	140.4	2.6	395	2.5	1097
Red 1%	2.7	71.3	2.6	123.3	2.5	370	2.7	965

The presence of pigments lowers the value of n since the content of heterogeneous nuclei is increased and crystallization gradually turns into diffusion-controlled process. From the classical equation [5] describing the crystalline phase growth the surface free energy of fold-containing surfaces σ_e was calculated:

$$\sigma_e = 6.24 \times 10^{-2} \text{ J/m}^2$$

It was assumed that crystallization occurs only on heterogeneous crystal nuclei and is controlled by secondary surficial nucleation. This result is in very good agreement with $6 \cdot 10^{-2}$ obtained by Magill [6] obtained from spherulitic growth rates.

Binsbergen [7] found that the active nucleating agents are insoluble in the polymer melt and their physical state is a fine dispersion of small crystals. As regards their chemical nature, the agents consist of both hydrocarbon groups and either polar groups or a condensed aromatic structure. The crystals of active agents consist either of parallel layers or of parallel rows of molecules. As a result, such arrangement of molecules enables polymer molecules to assume a stretched conformation over some distance, making crystallization much easier.

Among the selected pigments B Blue is the most active agent

accelerating crystallization of polyamide 6. In this case the half-times of crystallization are twice as short. Moreover, this agent causes changes in the mechanism of crystallization. Lower values of n (about 1) would imply induction only the development of fibrils, which subsequently do not organise into spherulites. The activity of B Blue is probably connected with its structure ie a regular packing of parallel stacks of the flat ring systems.

BB Red can also be numbered among nucleating agents. However, in this case the presence of polar group OH in the hydrocarbon part of molecule exerts an influence on the activity. The Avrami exponent is in the range between 2.4 and 2.7. It corresponds to a disc-like growth from instantaneous nuclei. Orange does not form crystals with parallel layers or rows and is not a nucleating agent.

The results of non-isothermal crystallization are in good agreement with isothermal crystallization data. For samples coloured with pigments temperatures of maximum crystallization rates are shifted, which testifies to smaller undercooling. The temperatures of DSC peaks reflect nucleation abilities of B Blue and BB Red.

According to Gurato [1] the equation for cooling crystallization at constant rate can be stated as

$$-\ln[a(2T_N - T_m^0) T_N^0/T_N^2(\Delta T)^2] = \frac{4b_0 \sigma_e T_n^0}{K \Delta h_m T_N \Delta T} - \text{const.} \quad (2)$$

where: a is the cooling rate, T_N is the temperature of deviation from the baseline on the thermogram, T_m^0 is the equilibrium melting point of the polymer, T is the degree of undercooling, h_m is the heat of fusion per unit volume, b_0 is the monolayer thickness, σ_e is the surface free energy of the lateral surface.

Test of equation (2) are shown in fig.2 for some samples.

The basic assumption of

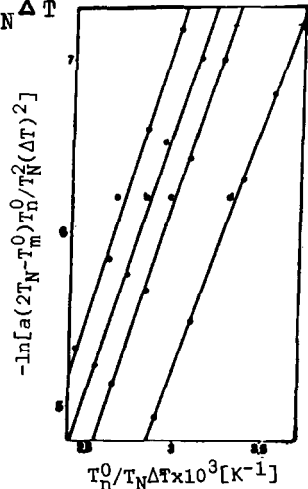


Fig.2. Test of equation (2) for: a/ 1% Orange, b/ colourless PA 6, c/ 1% Red, d/ 1% Blue.

most theories of heterogeneous nucleation is that the total interfacial free energy of the crystalline embryo is reduced by a foreign phase which provides part of the interface to be formed. This causes reduction in the activation free energy and a decrease in the degree of supercooling required for nucleation.

Our results correspond to this idea since the slopes of straight lines in fig.2 connected with the free energy of formation of a critical-size nucleus are different for PA 6 containing pigments. Apparent values of parameter ϕ_e calculated from the equation are: colourless nylon $6.35 \cdot 10^{-2}$, Orange $7.36 \cdot 10^{-2}$, Blue $5.41 \cdot 10^{-2}$, Red $6.02 \cdot 10^{-2}$ J/m. These remain in good agreement with the observed rates of crystallization. The surface free energy of nylon 6 coloured with B Blue is reduced by 20% which is reflected in faster crystallization. The nucleation abilities of the pigments can be arranged into the following series:

B Blue > BB Red > no pigment > G Orange

REFERENCES

1. G. Gurato, D. Gaidano, R. Zannotti, Makromol. Chem., 179 (1978) 231.
2. M. Ishibashi, Kobunshi Kagaku, 26 (1969) 199.
3. F. Rybnikar, Collect. Czech. Commun., 27 (1962) 106.
4. E. Turska, S. Gogolewski, Polymer, 12 (1971) 616.
5. B. Wunderlich, Macromolecular Physics, Vol.II, Academic Press, New York, 1976.
6. J.H. Magil, Polymer, 6 (1965) 367.
7. F.L. Binsbergen, Polymer, 11 (1970) 253.